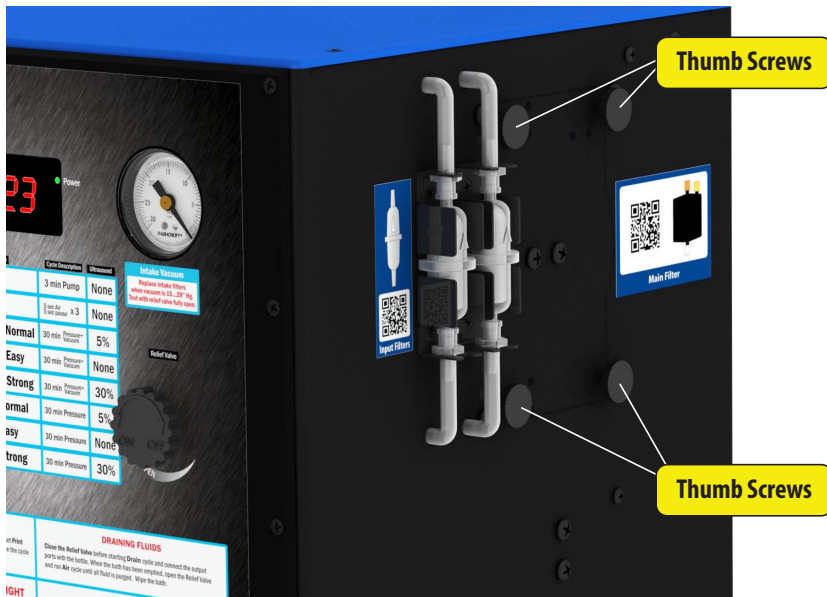


Main Filter Replacement on Print Head Doctor 5,6,7 and 8



Step 1

The main filter is located at the right side of the tower. To remove it, unscrew the 4 thumb screws.

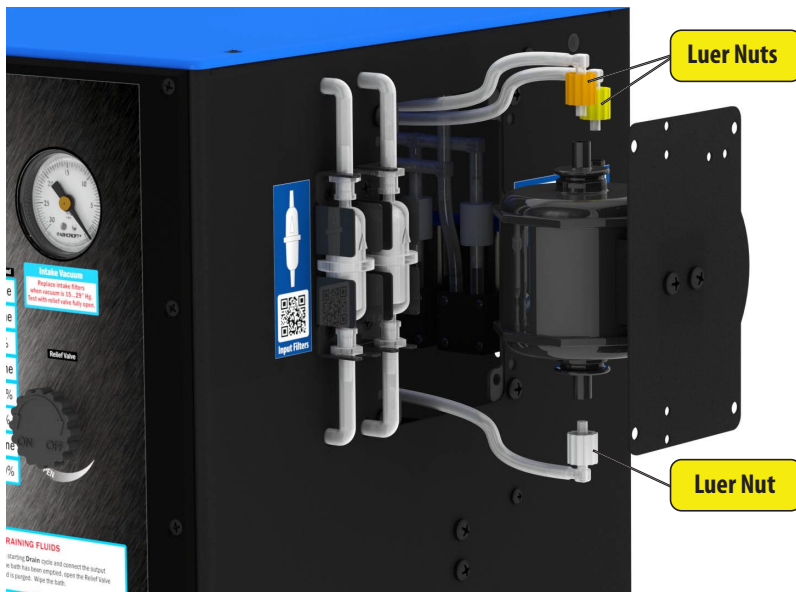


Step 2

Carefully pull out the filter plate, without creating stress on the connected tubing.

Step 3

Unscrew the Luer nuts and pull out fittings from the filter.



Step 4

Install the new filter. To connect the fittings to it, first slightly tighten the Luer nuts with a very little force. Then, push the fitting in, applying pressure to the fitting and **not to the nut**. After that, tighten the nut with moderate force.

It is very important to follow these instructions, to ensure a leak-free connection and to prevent damaging of the Luer fittings.

Step 5

Re-install the filter plate and secure it with thumb screws.